

KAYA Accessories

NEW

Kaya accessories give you creative freedom to choose the style and finish you want. Select a single-finish or mixed-finish combination with your choice of round or soft square cover plates.

Super Strong

With up to 5 fixing points per wall mount on your Kaya accessory, you get long-term durability and strength – no damaged walls. Mount into a wall stud for maximum strength, or use the included anchor plugs.



Endless Creative Possibilities

Mix 'n' match different shapes and finishes to create the look you want. If you want to update your bathroom styling later on, you can simply swap out the cover plates for a new one!



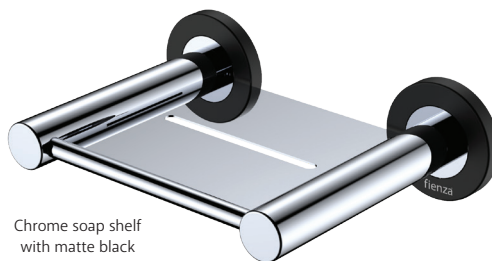
Matte black robe hook with urban brass round plate



Matte black robe hook with brushed nickel square plate



Brushed nickel roll holder with matte black square plate



Chrome soap shelf with matte black round plates



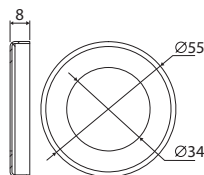
Urban Brass hand towel ring with matte black square plate

Customise with Optional Cover Plates

KAYA Round

(55 mm diameter)

Matches the KAYA range of mixers, showers and bath outlets!



Chrome
\$5 • 82800



Brushed Nickel
\$8 • 82800BN



Matte Black
\$8 • 82800MB

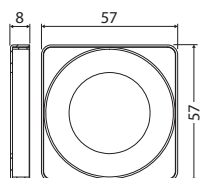


Urban Brass
\$8 • 82800UB

SANSA Soft Square

(57 x 57 mm)

Matches the SANSA range of mixers!



Chrome
\$5 • 82811



Brushed Nickel
\$8 • 82811BN



Matte Black
\$8 • 82811MB



Urban Brass
\$8 • 82811UB



KAYA Matte Black

NEW

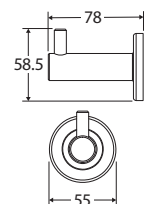
- Electroplated matte black finish
- Super strong – up to 5 fixing points per wall mount
- Fully concealed fixings
- Upgrade the look with different cover plate styles and finishes
- All products come with matching round cover plate as standard

Square cover plate also available

KAYA Robe Hook

\$39 • 82804MB

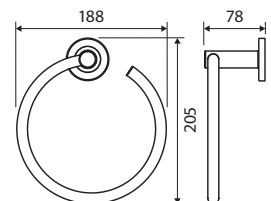
- Super strong 4-point wall mount
- Stainless steel and zinc construction
- Hex key used in installation



KAYA Hand Towel Ring

\$65 • 82802MB

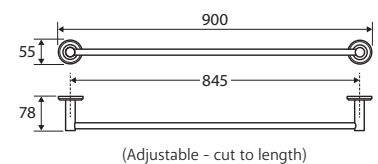
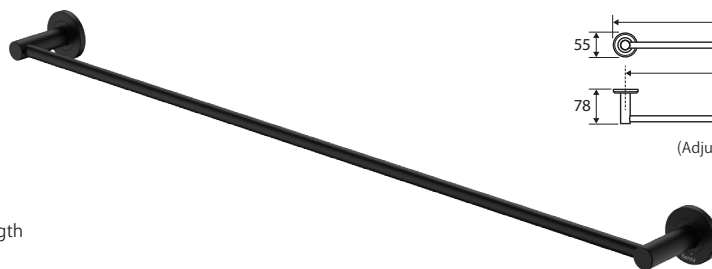
- Super strong 4-point wall mount
- Fixed ring position
- Stainless steel and zinc construction
- Hex key not required for installation



KAYA Single Towel Rail

900mm • \$90 • 82801MB

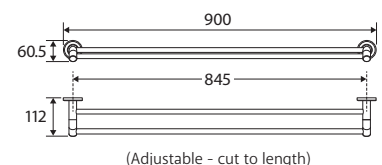
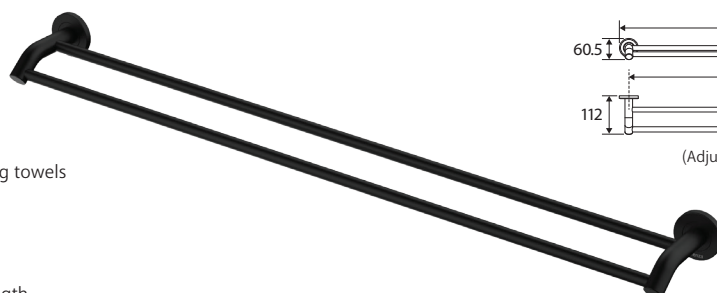
- Super strong 4-point wall mount
- No-spin rail design
- Stainless steel and zinc construction
- Hex key not required for installation
- Adjustable – rails can be cut to desired length



KAYA Double Towel Rail

900mm • \$140 • 82808MB

- Super strong 5-point wall mount
- No-spin rail design
- Sloping arm design makes it easier to hang towels
- Stainless steel and zinc construction
- Hex key not required for mounting (only used to secure rail)
- Adjustable – rails can be cut to desired length

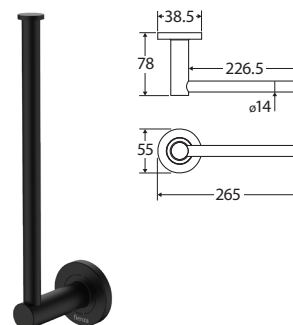




KAYA Hand Towel Rail/Roll Holder

\$54 • 82805MB

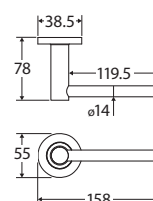
- Super strong 4-point wall mount
- Can be mounted horizontally for hand towel or vertically for storing 2 toilet paper rolls
- Reversible – can be mounted left-hand or right-hand facing
- Stainless steel construction
- Hex key not required for installation



KAYA Roll Holder

\$49 • 82803MB

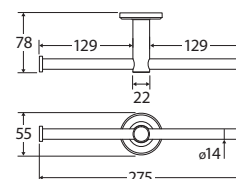
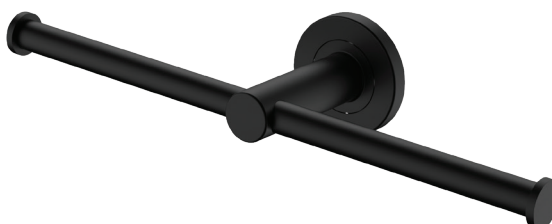
- Super strong 4-point wall mount
- Reversible – can be mounted left-hand or right-hand facing
- Stainless steel and zinc construction
- Hex key not required for installation



KAYA Double Roll Holder

\$59 • 82809MB

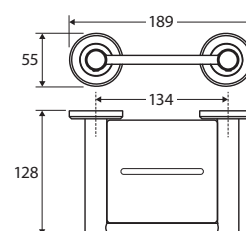
- Super strong 4-point wall mount
- One side is removable for mounting cover plate
- Stainless steel construction
- Hex key not required for installation



KAYA Soap Shelf

\$99 • 82806MB

- Super strong 4-point wall mount
- Drain channel
- Stainless steel and zinc construction
- Hex key used in installation



KAYA Shower Shelf

\$145 • 82807MB

- Super strong 4-point wall mount
- Drain channels
- Stainless steel and zinc construction
- Hex key used in installation

