

Available in



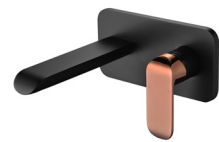
Brushed Nickel
HYB11-601BN

Brushed Gold
HYB11-601BG

Matt Black
HYB11-601MB



Chrome & White
HYB11-601CW



Matt Black with Rose Gold
Handle
HYB11-601MB-R



Kara Wall Basin Mixer

HYB11-601

Information

Finish: Chrome

WELS: 5 Star 5L/Min (T26647)

Material: Brass

Cartridge: Kerox 25mm Cartridge

Aerator: Neoperl Concealed

Working Pressure: 150-500 kpa

Operating Temperature: 1°C to 70°C

Maintenance and Care

- Do not use harsh detergents or products that contain chloride & halides.
- Do not use abrasive, cream or citrus based cleaners or hydrochloric acid.
- Surface should be cleaned only with a mild detergent that must be rinsed off.
- It is suggested to only clean with warm water and a soft cloth.
- Damage caused by the wrong cleaning methods used will void warranty.

Please visit <https://www.aclco.com.au/warranty.html> to view the full warranty