

# Care Back Rest

## 200992

- Meets AS1428.1 Access and Mobility requirements (when used with single flap seat and raised buttons; not compliant for sole occupancy units)
- Designed to withstand a force of 1100N (110 kg)
- 304 stainless steel frame with PU leather cushion
- Concealed fittings (mounting screws included)



### CHECK GOODS THOROUGHLY BEFORE INSTALLATION

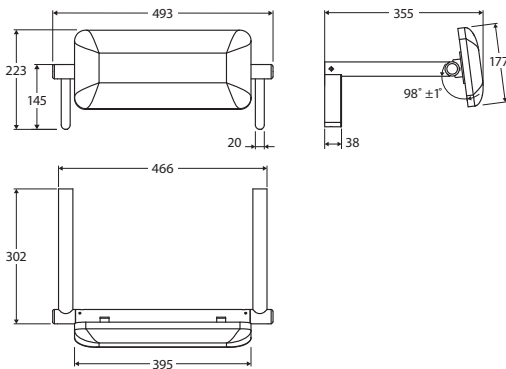
Installation of received goods that are damaged, warped or faulty will void warranty. Ensure all items meet your plumbing requirements.



PLEASE LEAVE THIS GUIDE WITH THE OWNER



AS 1428.1  
ACCESSIBLE  
COMPLIANT



## Installation Instructions

### PLEASE READ CAREFULLY BEFORE INSTALLATION

**NOTE:** This product must be installed by a licensed tradesperson.

For installation within Australia, the installation of the backrest must comply with AS 1428.1 Section 12 Sanitary facilities. Please refer to the standard before installing this product.

This product must be installed onto an adequate wall structure.

## Cleaning & Care

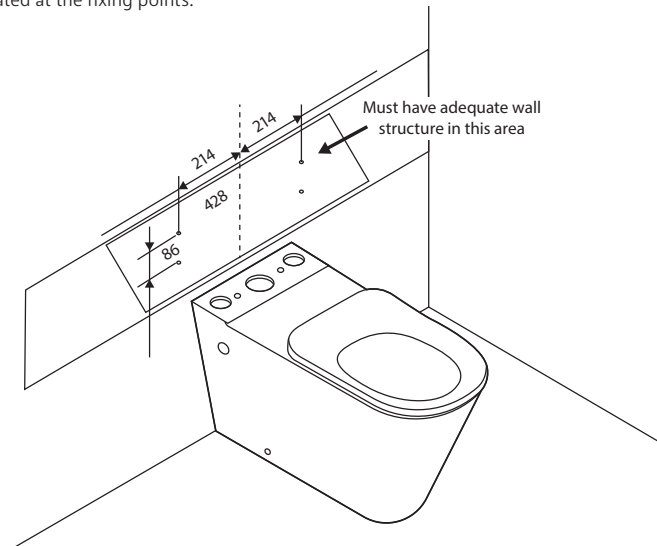
- Clean regularly using a mild liquid detergent and water.
- Do not use cream cleaners or bleach. These substances are abrasive.
- Do not use cleaning pads with abrasive surfaces as this may scratch the materials.

All installations should be carried out by a qualified tradesman in compliance with the National Plumbing & Drainage Code and any State or Local Authority Regulations, in accordance with AS/NZS 3500 series of standards and AS/NZA 6400. All measurements are in millimetres and are subject to change without notice. For ceramic products, please allow +/- 10 mm tolerance for manufacturing variance. Please refer to [fienza.com.au](http://fienza.com.au) for the latest product specification.

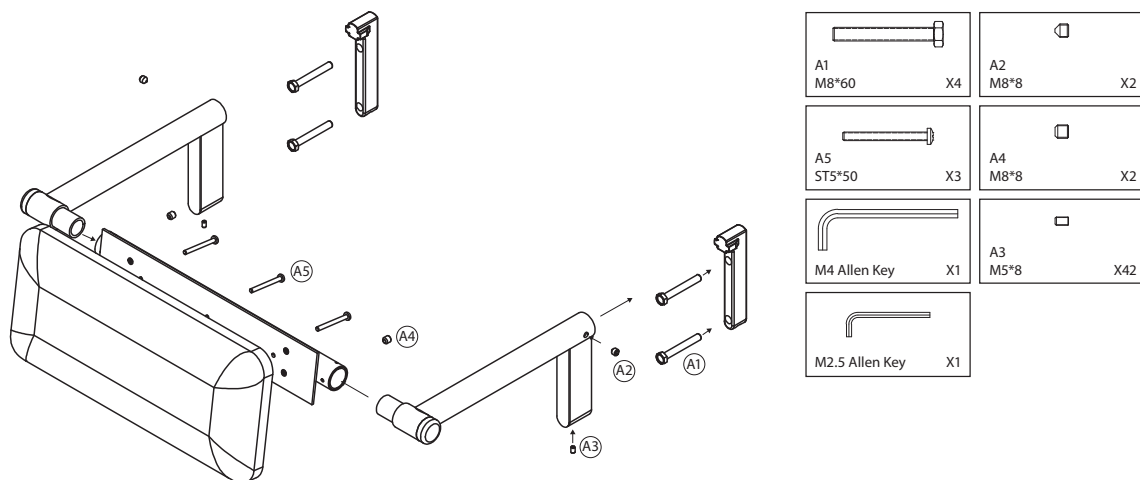
## Installation

1. Install the toilet pan (please refer to purchased toilet pan install guide for installation instructions). For back to wall toilets, install the cistern after installing the backrest.
2. Mark out fixing points on the wall for the Back Rest. Draw the centre line from the centre of the pan. Mark out the height of the backrest according to AS 1428 Standards for Back Rest Installation. From the centre line mark the left and right fixing points for the Fixing brackets.

Length between fixing points is 428mm, 214mm out on each side from the centre line.  
 Height of left and right fixing points is 86mm apart from centre of the hole.  
 Ensure adequate wall structure is located at the fixing points.



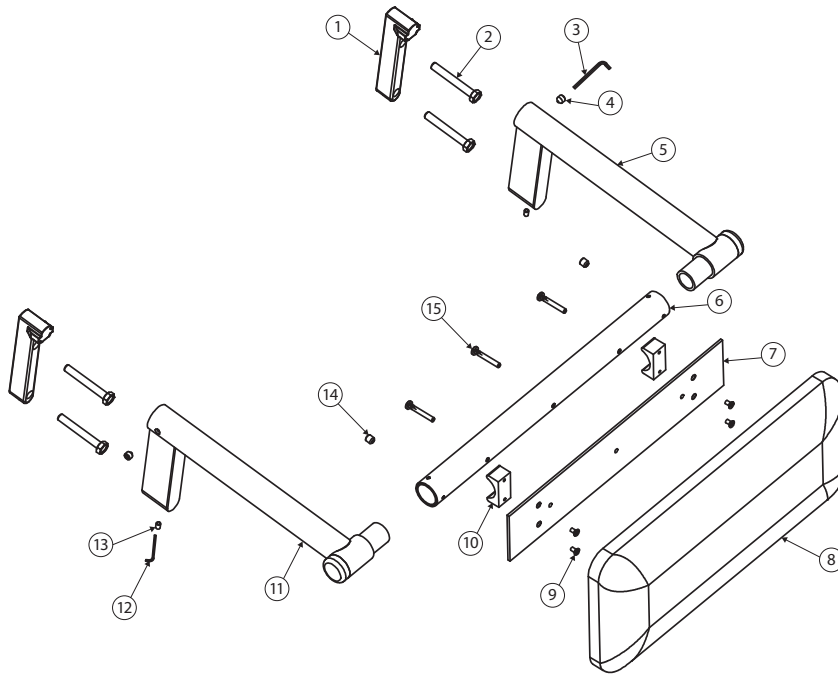
3. Assemble the Back Rest by inserting the left and right side arms into the backrest connection rail. Using the large M4 Allen key provided, fasten the A4 grub screws into the screw holes on the connection rail.
4. Hold the Back Rest up against the wall to check the alignment with the marked fixing points. Drill 4 holes for the A1 self tapping screws.
5. Using a drill, fasten the 2 wall fixing brackets to the adequate wall structure with the A1 self tapping screws as the diagram below shows.



6. Install the cistern using the relevant installation guide.
7. Put the back rest up against the wall covering the 2 wall fixing brackets. Using the M4 Allen key, screw the A2 grub screws (pointed tip) into the 2 side holes. Using the M2 Allen key, screw the A3 grub screws into the base of the left and right side arms and fasten all grub screws tightly.

All installations should be carried out by a qualified tradesman in compliance with the National Plumbing & Drainage Code and any State or Local Authority Regulations, in accordance with AS/NZS 3500 series of standards and AS/NZA 6400. All measurements are in millimetres and are subject to change without notice. For ceramic products, please allow +/- 10 mm tolerance for manufacturing variance. Please refer to [fienza.com.au](http://fienza.com.au) for the latest product specification.

## Product Components



1	Wall Fixing Bracket x 2
2	A1 (M8*60) Self Tapping Screw x 4
3	M4 Allen Key x 1
4	A2 (M8*8) Grub Screw (pointed tip) x 2
5	Right side arm x 1
6	Connection Rail x 1
7	Fixing Plate x 1
8	Pillow x 1
9	M4*8 Cross Bolts x 4
10	Connection Rail x 1 & Plate Connector x 2
11	Left Side Arm x 1
12	M2.5 Allen Key x 1
13	A3 (M5*8) Grub Screw x 2
14	A4 (M8*8) Grub Screw (flat tip) x 2
15	ST5*50 Self Tapping Screw x 3

All installations should be carried out by a qualified tradesman in compliance with the National Plumbing & Drainage Code and any State or Local Authority Regulations, in accordance with AS/NZS 3500 series of standards and AS/NZS 6400. All measurements are in millimetres and are subject to change without notice. For ceramic products, please allow +/- 10 mm tolerance for manufacturing variance. Please refer to [fienza.com.au](http://fienza.com.au) for the latest product specification.

## Warranties

### Residential Warranty Periods

Applies to domestic uses and applications of Fienza® products, such as private dwellings and retirement villages.

### Commercial Warranty Periods

Applies to commercial uses and applications of Fienza® products, including, but not limited to: commercial food premises such as restaurants; commercial accommodation such as hotels; hospitals and healthcare facilities; public amenities; and industrial, laboratory and manufacturing facilities.

Product Component	Residential	Commercial
Structure Only	5 years replacement parts or product	5 years replacement parts or product
Finishes - PVD & Electroplated	5 years replacement parts or product	1 year replacement parts or product
Spare Parts	1 year replacement parts or product	1 year replacement parts or product

### Australian Consumer Law

Our goods include guarantees that cannot be excluded under the Australian Consumer Law. You are entitled to a replacement or refund for a major failure and compensation for any other reasonably foreseeable loss or damage. You are also entitled to have the goods repaired or replaced if the goods fail to be of acceptable quality and the failure does not amount to a major failure.

Fienza Pty Ltd reserves the right to make changes in product characteristics, packaging or availability at any time without notice. Please visit [fienza.com.au](http://fienza.com.au) for the latest information.

### Warranty Conditions

- Installation has been carried out by a licensed tradesperson in accordance with all applicable Building, Plumbing and Electrical codes, and Federal, State, or Local Government Regulations in accordance with AS/NZS 3500 Plumbing & Drainage, AS/NZS 6400 Water Efficient Products, and AS/NZS 3000 Electrical standards for any installations to which these standards apply.
- All maintenance and adjustments to the product after the installation have been carried out by a licensed tradesperson.
- All care and cleaning instructions have been adhered to as prescribed.
- All goods of substandard quality manufacture (excluding imperfections permitted within AS1976 - Vitreous China used in Sanitary Applications) will be credited or replaced by Fienza when advised within the warranty period, subject to prior inspection and agreement.
- Proof of purchase is required for warranty claims.

### Warranty Limitations

To the extent permitted under the Trade Practices Act and other relevant legislation, Fienza’s liability is limited to:

- The cost of replacing the goods, or
- The cost of obtaining equivalent goods, or
- The cost of having the goods repaired.
- Fienza is not responsible for any lack of operation or performance of goods (or any loss or damage) where goods are used or adapted for use with other goods not supplied by Fienza.
- It is the responsibility of the customer and installer before installation to ensure that all components are correct and free of obvious visible faults.
- Fienza is not responsible for the labour and rectification costs incurred in the above circumstance.

### Conditions for On-Site Warranty Service Calls

Fienza will charge a service fee for each visit to an installation by its technician where it is determined that the fault is due to poorly executed or unlicensed installation work or where the product is not a genuine Fienza product or where the product is outside the warranty period. This may be paid in advance by credit card over the phone to a Fienza technician attending the site and will be refunded if the Fienza product is found to be at fault.

For warranty support, please contact Fienza

15 Walter Cres, Lawnton QLD 4501 PO Box 5381, Brendale QLD 4500  
**P** 07 3490 6700 **F** 07 3490 6719 **E** [help@fienza.com.au](mailto:help@fienza.com.au) ABN 76 136 411 311



All installations should be carried out by a qualified tradesman in compliance with the National Plumbing & Drainage Code and any State or Local Authority Regulations, in accordance with AS/NZS 3500 series of standards and AS/NZA 6400. All measurements are in millimetres and are subject to change without notice. For ceramic products, please allow +/- 10 mm tolerance for manufacturing variance. Please refer to [fienza.com.au](http://fienza.com.au) for the latest product specification.