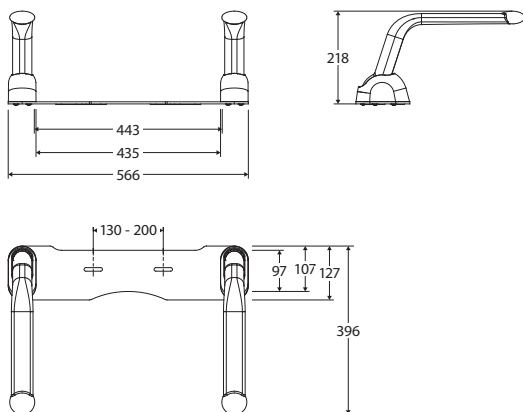


Toilet Support Arms

FAL108

- Suited for independent living
- Provides firm support and extra assistance for sitting and standing
- Arms can pivot backwards when not in use
- Rubber coated arm for a strong grip
- Fitted between seat and pan
- Can be installed onto floor standing and wall faced toilet suites (fixings included)
- Maximum load rating: 120kg



! CHECK GOODS THOROUGHLY BEFORE INSTALLATION
 Installation of received goods that are damaged, warped or faulty will void warranty. Ensure all items meet your plumbing requirements.

! PLEASE LEAVE THIS GUIDE WITH THE OWNER



Installation Instructions

PLEASE READ CAREFULLY BEFORE INSTALLATION

NOTE: This product must be installed by a licensed tradesperson.

This product must be installed onto an adequate wall structure.

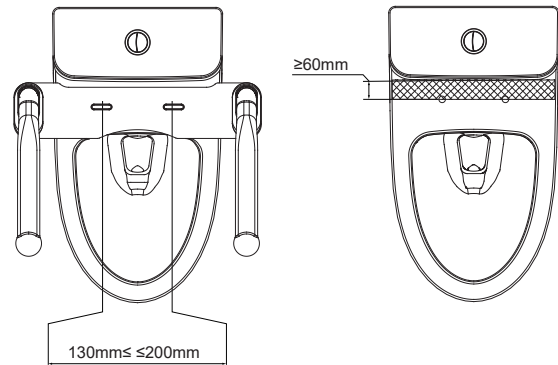
Cleaning & Care

- Clean regularly using a mild liquid detergent and water.
- Do not use cream cleaners or bleach. These substances are abrasive.
- Do not use cleaning pads with abrasive surfaces as this may scratch the materials.

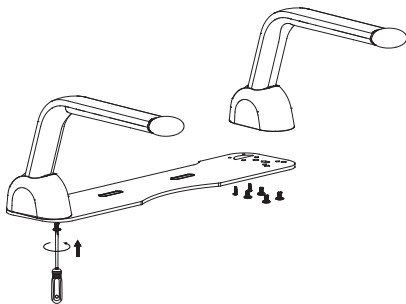
All installations should be carried out by a qualified tradesman in compliance with the National Plumbing & Drainage Code and any State or Local Authority Regulations, in accordance with AS/NZS 3500 series of standards and AS/NZA 6400. All measurements are in millimetres and are subject to change without notice. For ceramic products, please allow +/- 10 mm tolerance for manufacturing variance. Please refer to fienza.com.au for the latest product specification.

Installation

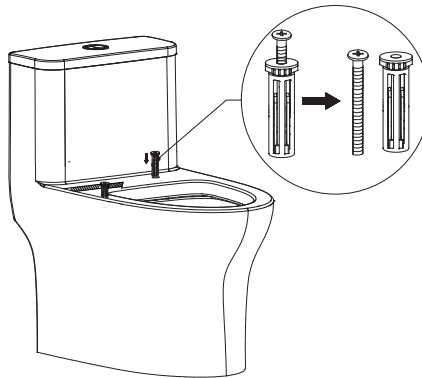
1. Confirm there is sufficient space for the toilet support arms to fit on the toilet suite. Remove the existing toilet seat and all seat fixing components. Measure the distance between the seat mounting holes and the distance from the mounting holes to the front of the cistern.
2. There must be a minimum of 60mm from the center of the mounting holes to the front of the cistern. Ensure this area is also smooth and flat. The distance between the two mounting holes must be between 130mm and 200mm. If there is sufficient clearance to mount the support arms – continue with the installation.



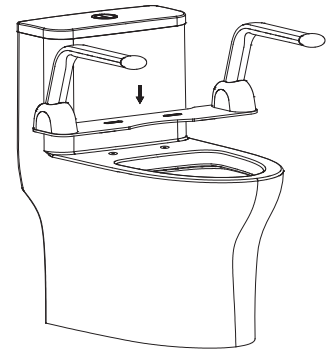
3. Fit and tighten one support arm assembly to the mounting plate using two 4 gauge self-tapping screws and four M5 machine screws. Note, the silicone pads around the seat mounting holes are on the underside of the mounting plate. Repeat for the alternate support arm.



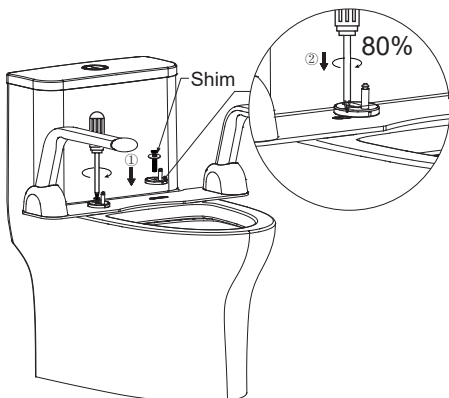
4. Remove the stainless screw from the supplied toilet seat hinge plug. Insert the supplied hinge plug into the seat mounting hole on the toilet pan.



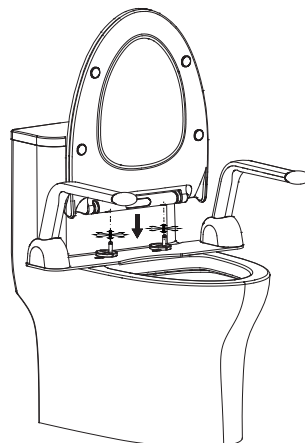
5. Place the support arm mounting plates with fitted support arms and align the plate to the seat mounting holes in the toilet pan.



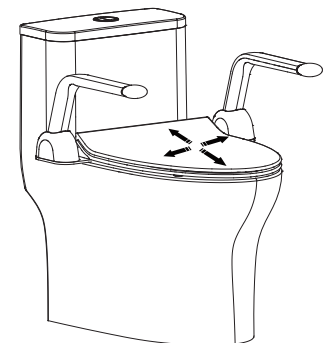
6. Re-install the toilet seat fixing components (except the hinge covers) using the supplied stainless seat hinge plug screw. Partially tighten the seat hinge plug screw (to approximately 80% tight).



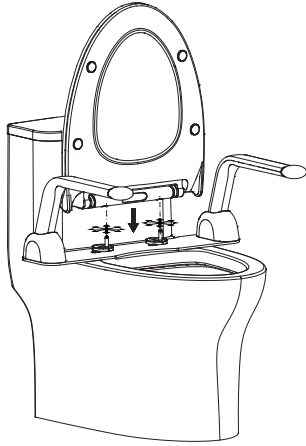
7. Push the toilet seat down onto the seat fixings.



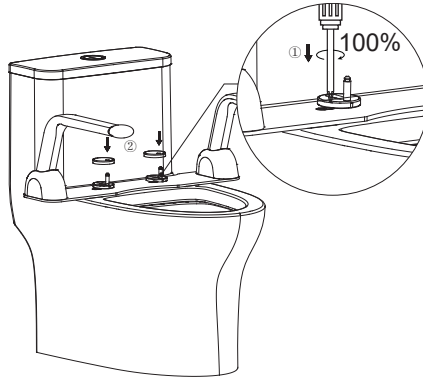
8. Align the toilet seat and the support arms to the toilet pan.



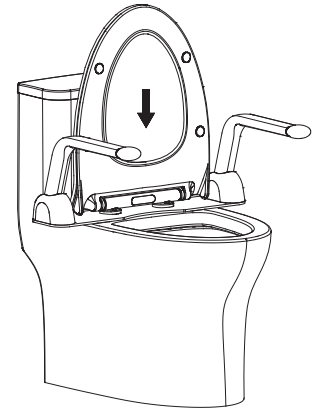
9. Push the seat release button and carefully lift the seat straight up to remove.



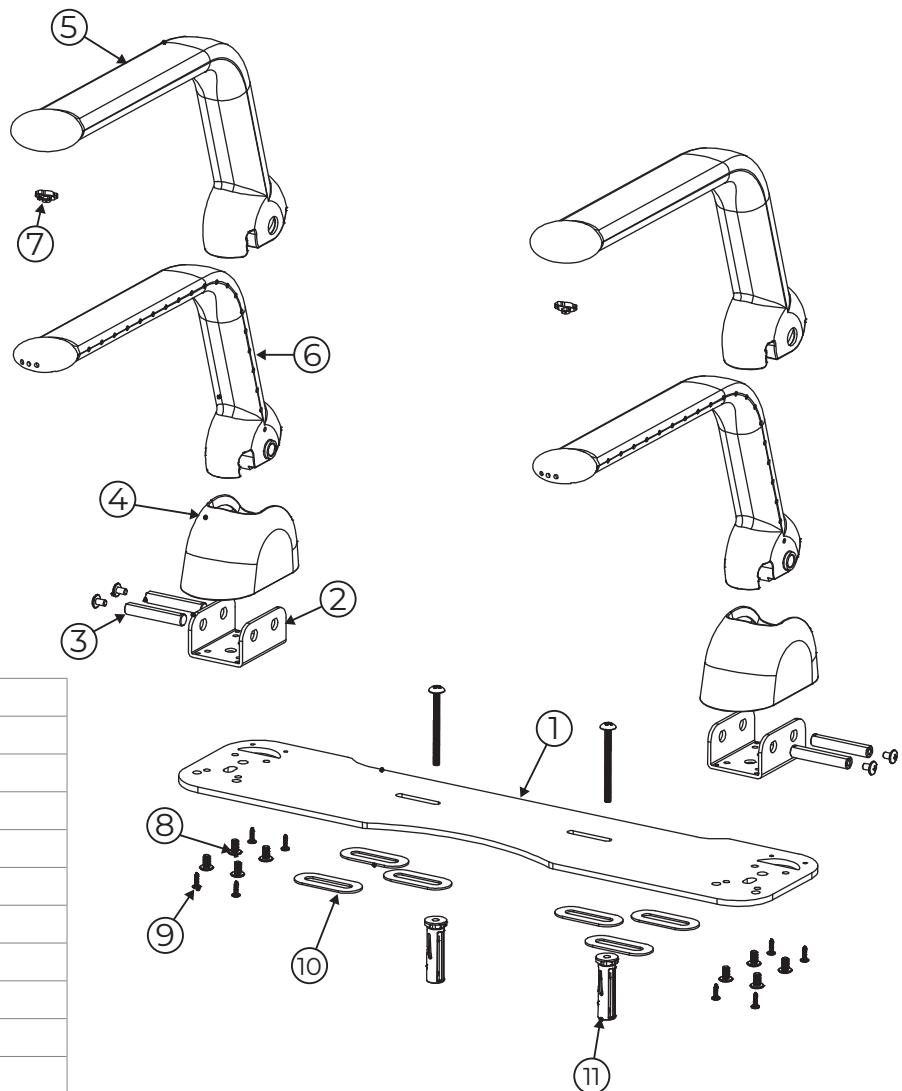
10. Tighten the seat hinge screws until fully tight. Place the hinge covers on the seat fixing mounts.



11. Replace the toilet seat and check seat operation. Adjust as necessary.



Product Components



1	Fixed plate
2	Fixed base
3	Pin shaft
4	Decorative cover
5	Soft handrail
6	Armrest skeleton
7	Locating column
8	M5 Screw
9	Stainless steel screw
10	Anti-skid rubber pad
11	Seat hinge screw kit

All installations should be carried out by a qualified tradesman in compliance with the National Plumbing & Drainage Code and any State or Local Authority Regulations, in accordance with AS/NZS 3500 series of standards and AS/NZA 6400. All measurements are in millimetres and are subject to change without notice. For ceramic products, please allow +/- 10 mm tolerance for manufacturing variance. Please refer to fienza.com.au for the latest product specification.

Warranties

Residential Warranty Periods

Applies to domestic uses and applications of Fienza® products, such as private dwellings and retirement villages.

Commercial Warranty Periods

Applies to commercial uses and applications of Fienza® products, including, but not limited to: commercial food premises such as restaurants; commercial accommodation such as hotels; hospitals and healthcare facilities; public amenities; and industrial, laboratory and manufacturing facilities.

Product Component	Residential	Commercial
Structure Only	5 years replacement parts or product	5 years replacement parts or product
Spare Parts	1 year replacement parts or product	1 year replacement parts or product

Australian Consumer Law

Our goods include guarantees that cannot be excluded under the Australian Consumer Law. You are entitled to a replacement or refund for a major failure and compensation for any other reasonably foreseeable loss or damage. You are also entitled to have the goods repaired or replaced if the goods fail to be of acceptable quality and the failure does not amount to a major failure.

Fienza Pty Ltd reserves the right to make changes in product characteristics, packaging or availability at any time without notice. Please visit fienza.com.au for the latest information.

Warranty Conditions

- Installation has been carried out by a licensed tradesperson in accordance with all applicable Building, Plumbing and Electrical codes, and Federal, State, or Local Government Regulations in accordance with AS/NZS 3500 Plumbing & Drainage, AS/NZS 6400 Water Efficient Products, and AS/NZS 3000 Electrical standards for any installations to which these standards apply.
- All maintenance and adjustments to the product after the installation have been carried out by a licensed tradesperson.
- All care and cleaning instructions have been adhered to as prescribed.
- All goods of substandard quality manufacture (excluding imperfections permitted within AS1976 - Vitreous China used in Sanitary Applications) will be credited or replaced by Fienza when advised within the warranty period, subject to prior inspection and agreement.
- Proof of purchase is required for warranty claims.

Warranty Limitations

To the extent permitted under the Trade Practices Act and other relevant legislation, Fienza’s liability is limited to:

- The cost of replacing the goods, or
- The cost of obtaining equivalent goods, or
- The cost of having the goods repaired.
- Fienza is not responsible for any lack of operation or performance of goods (or any loss or damage) where goods are used or adapted for use with other goods not supplied by Fienza.
- It is the responsibility of the customer and installer before installation to ensure that all components are correct and free of obvious visible faults.
- Fienza is not responsible for the labour and rectification costs incurred in the above circumstance.

Conditions for On-Site Warranty Service Calls

Fienza will charge a service fee for each visit to an installation by its technician where it is determined that the fault is due to poorly executed or unlicensed installation work or where the product is not a genuine Fienza product or where the product is outside the warranty period. This may be paid in advance by credit card over the phone to a Fienza technician attending the site and will be refunded if the Fienza product is found to be at fault.

For warranty support, please contact Fienza

15 Walter Cres, Lawnton QLD 4501 PO Box 5381, Brendale QLD 4500
P 07 3490 6700 **F** 07 3490 6719 **E** help@fienza.com.au ABN 76 136 411 311



All installations should be carried out by a qualified tradesman in compliance with the National Plumbing & Drainage Code and any State or Local Authority Regulations, in accordance with AS/NZS 3500 series of standards and AS/NZA 6400. All measurements are in millimetres and are subject to change without notice. For ceramic products, please allow +/- 10 mm tolerance for manufacturing variance. Please refer to fienza.com.au for the latest product specification.